

# SPECIFICATIONS: 176 & 200 SAW FILER

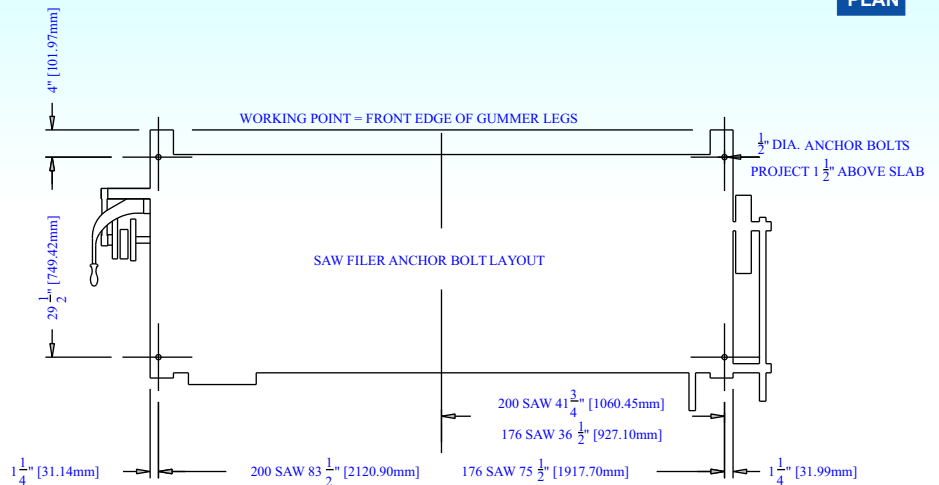
THE COTTOR / CANTRELL 176 & 200 SAW FILER MAINTAINES SAWS IN PERFECT CONDITION AT ALL TIMES. THE CANTRELL SAW FILER HAS MACHINE TOOL PRECISION THAT WILL CUT IN AND MAINTAIN A GOOD TOOTH PROFILE THROUGHOUT THE LIFE OF THE SAWS.

COTTOR / CANTRELL HAS DEVELOPED MANY IMPROVEMENTS TO THE SAW SHARPENING PROCESS INCLUDING A BRAND NEW "ENGINEERED" SAW FILE.

THE NEW SAW FILE COMBINED WITH THE NEW SAW FILER CREATES AN ENHANCED TOOTH PROFILE THAT PROMOTES HIGHER DELIMITING CAPACITIES.

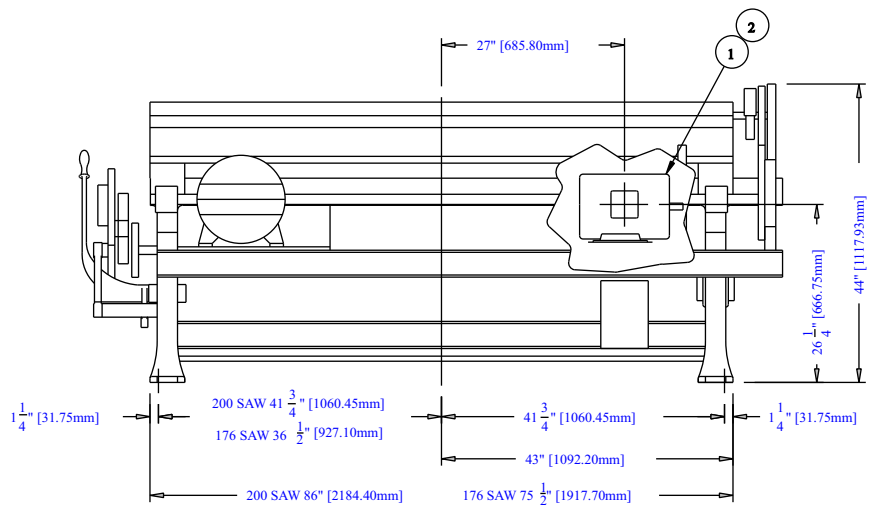
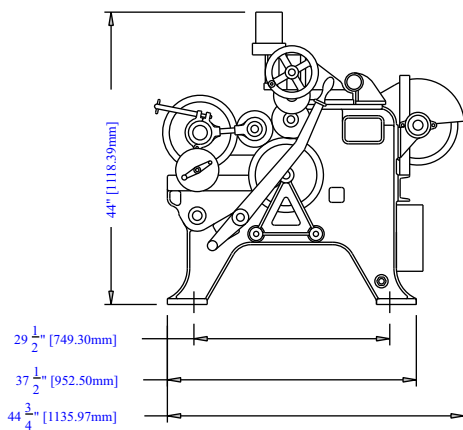
THE SAW FILER IS DESIGNED TO PROVIDE EXTRA LONG LIFE WHILE MAINTAINING QUALITY AND CONSISTENCY NEVER BEFORE ACHIEVED.

**PLAN**



**FRONT**

**ELEVATION**



- 1] 176 SAW DRIVE MOTOR - 2 HP - 60 HZ / 3 HP - 50 HZ
- 2] 200 SAW DRIVE MOTOR - 3 HP - 60 HZ / 5 HP - 50 HZ
- 3] SHIPPING WEIGHT: (176) 1930 LBS / 875.4KG (200) 2150 LBS / 975.2KG
- 4] SHIPPING VOLUME: (176) 145 FT / 4.1 M (200) 160 FT / 4.5 M
- 5] CANTRELL PROVIDES A COMPLETE LINE OF PARTS AND ACCESSORIES



**CANTRELL WORLDWIDE (INDIA) PVT. LTD.**

706, Acme Plaza, Opp. Sangam Talkies, Andheri-Kurla Road, Andheri (East), Mumbai-400 059. (India)  
Tel. : +91-22-2826 4201/2/3/4 • Fax : +91-22-2834 6161  
E-mail : cantrellworldwide@vsnl.net • www.cantrellworldwide.net